



MANUFACTURED BY
ROBAND AUSTRALIA PTY LTD

INSTALLATION INSTRUCTIONS

FOOD BAR TRAY RACES

MODELS: TR14, TR15, TR16, TR22, TR23, TR24, TR25 & TR26

These instructions cover the installation of all models of ROBAND® food bar tray races listed above. Installation of a tray race is an easy task provided these instructions are followed carefully.

The tray races are supplied ready for installation onto the equivalent sized food bar, that is, an E23 food bar will require a TR23 tray race. Each tray race consists of two angled brackets, a stainless steel tray and supplied fixings. Once the brackets are secured onto the food bar, the tray is then placed on top of the brackets completing the installation.

PREPARATION

The following points need to be considered before installation.

- **Location of the tray race:**

The tray races may be installed on the front or rear of the food bar.

- **Vertical position of the tray race:**

The tray races may be mounted vertically within a range of 45mm. The highest recommended position makes the tray surface level with the edge of the food bar tank. The lowest position is 45mm below this point, with the brackets as low as they can go on the legs, without protruding below the food bar.

- **Method of securing the angled brackets:**

The tray races are supplied with both pop rivets and self-tapping screws for securing the angled brackets to the food bar. Either of these two fixings may be used, the only difference being that securing the brackets with self-tapping screws provides a more flexible, non-permanent installation. The holes in the brackets are 4.25mm diameter which is suitable for either rivets or screws. Rivets and screws are supplied in the kit.

Before installation you should decide exactly how you would like to position your tray race and how you would like to secure the brackets.

INSTALLATION

1. Ensure that the food bar is switched off, disconnected from mains power and cool.
2. Refer to Figure 1 overleaf and mark out the positions for the holes on the side of the food bar that you have decided to install the tray race, at your desired height. The dimensions shown position the tray in the lowest position.
3. Drill the 3.2mm diameter (1/8") holes in the marked positions on the food bar legs. A total of four holes are required.

WARNING: Care should be taken to avoid drilling through the tank of the food bar during this operation. Also, rear legs, (control panel side), carry electrical wiring for the heat lamps or refrigerant tubes in cold food bars. **Only** drill through the outside skin of the leg to minimise the risk of damage to the tank, tubes and wiring.

4. Screw or rivet the two brackets to the food bar, one on each leg. The brackets are secured with the smooth side facing outwards as shown on the drawing. Also, the holes in the brackets allow them to be used on either the left or the right side. They are not handed for one side or the other.
5. Place the tray on top of the brackets. This is done by holding the tray in front of you lengthways and placing the front edge (the edge you're holding) over the outside of the brackets first, then lowering the rear of the tray down to rest on top of the brackets. Refer to Figure 2 below.
6. If holes are present, install one self-tapping screw into the bracket on each end of the tray to complete the installation.

Please note: Although every care is taken during manufacture to remove all sharp edges, care should be taken when cleaning to avoid injury.

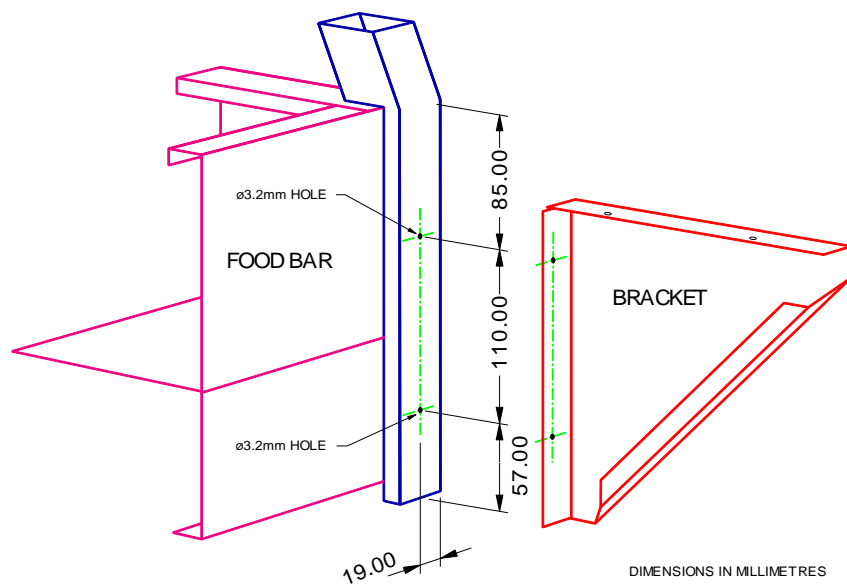


Figure 1 - Mounting the Brackets

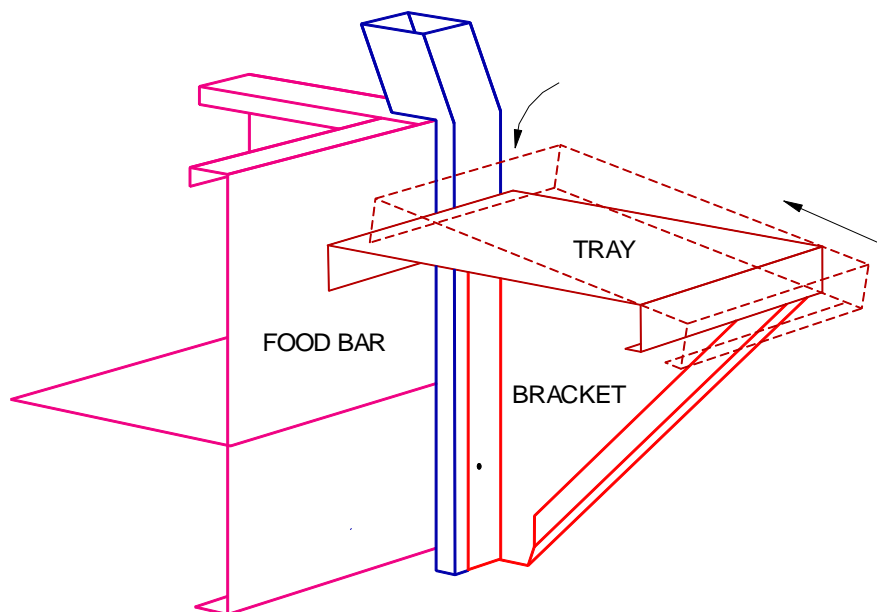


Figure 2 - Installing the Tray